



THE ACRES

FLOOR PLANS



3-BEDROOM
VILLAS

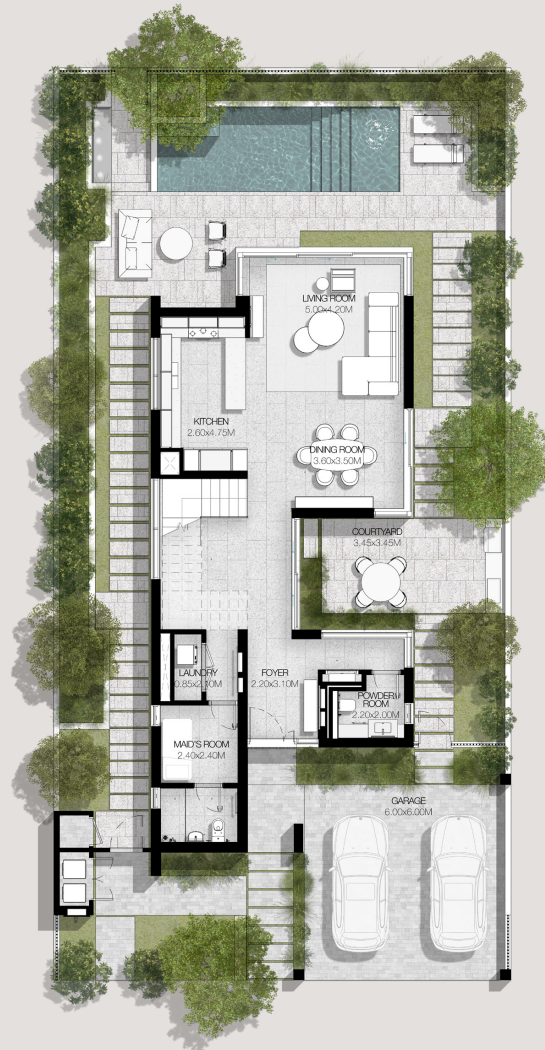


THE ACRES

3 BEDROOMS

VILLA TYPE A-3BR

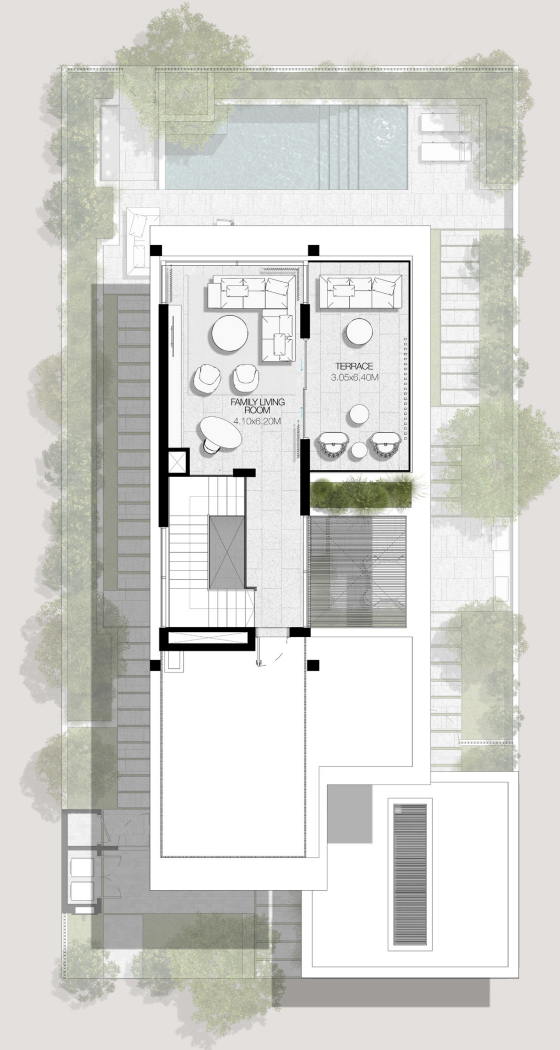
TOTAL AREA: 363.74 SQM | 3,915.26 SQFT



GROUND LEVEL



FIRST LEVEL



SECOND LEVEL

DISCLAIMER: PLANS, DETAILS AND UNIT ORIENTATION INCLUDED ARE INDICATIVE ONLY AND ARE SUBJECT TO CHANGE BY THE DEVELOPER/SELLER AT ITS SOLE DISCRETION WITHOUT NOTICE AND/OR LIABILITY. ALL IMAGES, INCLUDING FEATURES, FINISHES, FURNISHINGS, VIEW AND SCALE ARE ILLUSTRATIVE ONLY. FINAL AREAS, ORIENTATION, DIMENSIONS, LAYOUT AND MATERIALS MAY DIFFER FROM THOSE STATES.



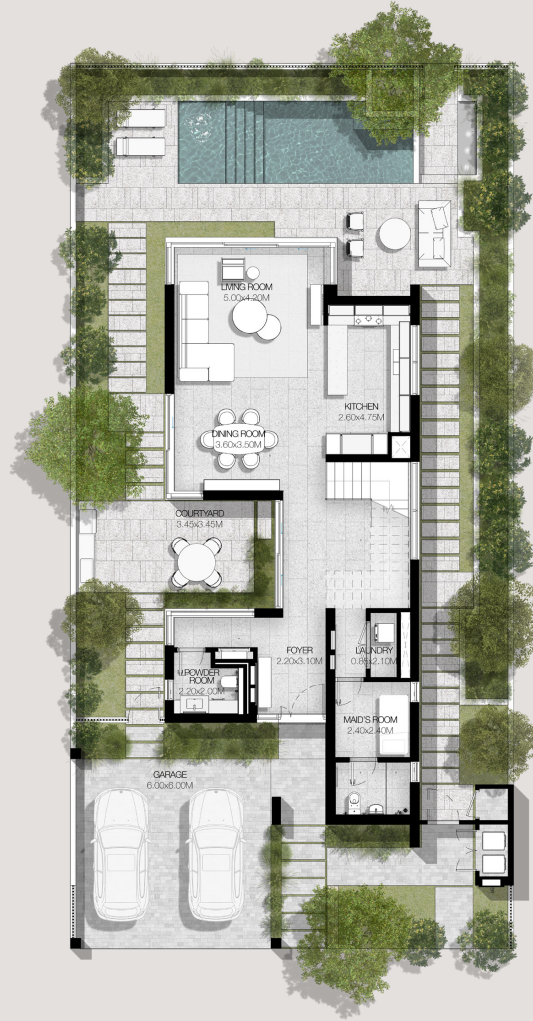


THE ACRES

3 BEDROOMS

VILLA TYPE A-3BR(M)

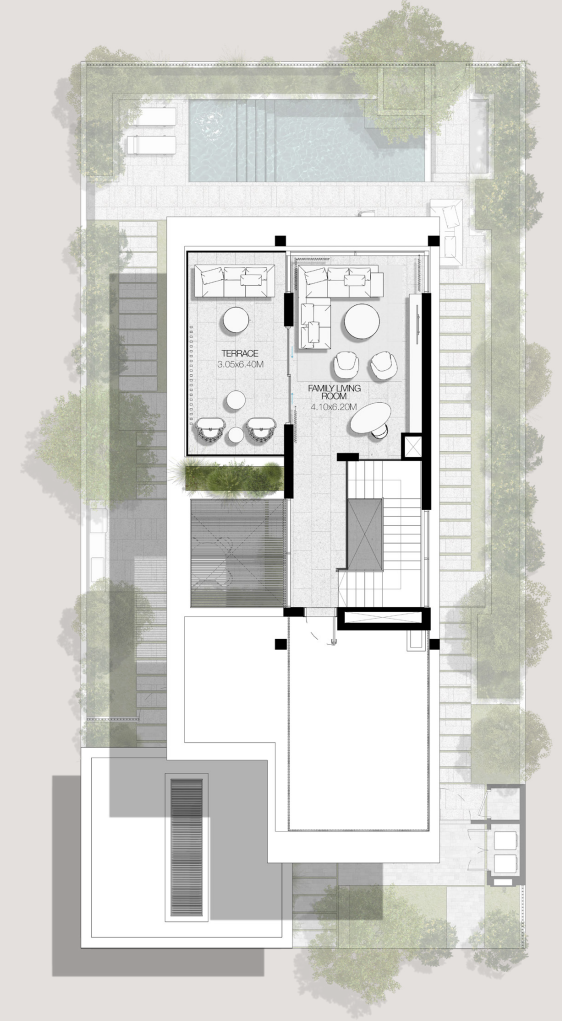
TOTAL AREA: 363.74 SQM | 3,915.26 SQFT



GROUND LEVEL



FIRST LEVEL



SECOND LEVEL

DISCLAIMER: PLANS, DETAILS AND UNIT ORIENTATION INCLUDED ARE INDICATIVE ONLY AND ARE SUBJECT TO CHANGE BY THE DEVELOPER/SELLER AT ITS SOLE DISCRETION WITHOUT NOTICE AND/OR LIABILITY. ALL IMAGES, INCLUDING FEATURES, FINISHES, FURNISHINGS, VIEW AND SCALE ARE ILLUSTRATIVE ONLY. FINAL AREAS, ORIENTATION, DIMENSIONS, LAYOUT AND MATERIALS MAY DIFFER FROM THOSE STATES.





THE ACRES

3 BEDROOMS

VILLA TYPE B-3BR

TOTAL AREA: 283.22 SQM | 3,048.55 SQFT



GROUND LEVEL



FIRST LEVEL

DISCLAIMER: PLANS, DETAILS AND UNIT ORIENTATION INCLUDED ARE INDICATIVE ONLY AND ARE SUBJECT TO CHANGE BY THE DEVELOPER/SELLER AT ITS SOLE DISCRETION WITHOUT NOTICE AND/OR LIABILITY. ALL IMAGES, INCLUDING FEATURES, FINISHES, FURNISHINGS, VIEW AND SCALE ARE ILLUSTRATIVE ONLY. FINAL AREAS, ORIENTATION, DIMENSIONS, LAYOUT AND MATERIALS MAY DIFFER FROM THOSE STATES.



THE ACRES

3 BEDROOMS

VILLA TYPE B-3BR(M)

TOTAL AREA: 283.23 SQ.M | 3,048.66 SQ.FT



GROUND LEVEL



FIRST LEVEL

DISCLAIMER: PLANS, DETAILS AND UNIT ORIENTATION INCLUDED ARE INDICATIVE ONLY AND ARE SUBJECT TO CHANGE BY THE DEVELOPER/SELLER AT ITS SOLE DISCRETION WITHOUT NOTICE AND/OR LIABILITY. ALL IMAGES, INCLUDING FEATURES, FINISHES, FURNISHINGS, VIEW AND SCALE ARE ILLUSTRATIVE ONLY. FINAL AREAS, ORIENTATION, DIMENSIONS, LAYOUT AND MATERIALS MAY DIFFER FROM THOSE STATES.



4-BEDROOM VILLAS



THE ACRES

4 BEDROOMS

VILLA TYPE C-4BR

TOTAL AREA: 452.90 SQM | 4,874.92 SQFT



GROUND LEVEL



FIRST LEVEL



SECOND LEVEL

DISCLAIMER: PLANS, DETAILS AND UNIT ORIENTATION INCLUDED ARE INDICATIVE ONLY AND ARE SUBJECT TO CHANGE BY THE DEVELOPER/SELLER AT ITS SOLE DISCRETION WITHOUT NOTICE AND/OR LIABILITY. ALL IMAGES, INCLUDING FEATURES, FINISHES, FURNISHINGS, VIEW AND SCALE ARE ILLUSTRATIVE ONLY. FINAL AREAS, ORIENTATION, DIMENSIONS, LAYOUT AND MATERIALS MAY DIFFER FROM THOSE STATES.





THE ACRES

4 BEDROOMS

VILLA TYPE C-4BR(M)

TOTAL AREA: 452.89 SQM | 4,874.87 SQFT



GROUND LEVEL



FIRST LEVEL



SECOND LEVEL

DISCLAIMER: PLANS, DETAILS AND UNIT ORIENTATION INCLUDED ARE INDICATIVE ONLY AND ARE SUBJECT TO CHANGE BY THE DEVELOPER/SELLER AT ITS SOLE DISCRETION WITHOUT NOTICE AND/OR LIABILITY. ALL IMAGES, INCLUDING FEATURES, FINISHES, FURNISHINGS, VIEW AND SCALE ARE ILLUSTRATIVE ONLY. FINAL AREAS, ORIENTATION, DIMENSIONS, LAYOUT AND MATERIALS MAY DIFFER FROM THOSE STATES.





THE ACRES



GROUND LEVEL



FIRST LEVEL

4 BEDROOMS

VILLA TYPE D-4BR

TOTAL AREA: 380.10 SQM | 4,091.36 SQFT

DISCLAIMER: PLANS, DETAILS AND UNIT ORIENTATION INCLUDED ARE INDICATIVE ONLY AND ARE SUBJECT TO CHANGE BY THE DEVELOPER/SELLER AT ITS SOLE DISCRETION WITHOUT NOTICE AND/OR LIABILITY. ALL IMAGES, INCLUDING FEATURES, FINISHES, FURNISHINGS, VIEW AND SCALE ARE ILLUSTRATIVE ONLY. FINAL AREAS, ORIENTATION, DIMENSIONS, LAYOUT AND MATERIALS MAY DIFFER FROM THOSE STATES.





THE ACRES

4 BEDROOMS

VILLA TYPE D-4BR(M)

TOTAL AREA: 380.10 SQM | 4,091.36 SQFT



GROUND LEVEL



FIRST LEVEL

DISCLAIMER: PLANS, DETAILS AND UNIT ORIENTATION INCLUDED ARE INDICATIVE ONLY AND ARE SUBJECT TO CHANGE BY THE DEVELOPER/SELLER AT ITS SOLE DISCRETION WITHOUT NOTICE AND/OR LIABILITY. ALL IMAGES, INCLUDING FEATURES, FINISHES, FURNISHINGS, VIEW AND SCALE ARE ILLUSTRATIVE ONLY. FINAL AREAS, ORIENTATION, DIMENSIONS, LAYOUT AND MATERIALS MAY DIFFER FROM THOSE STATES.

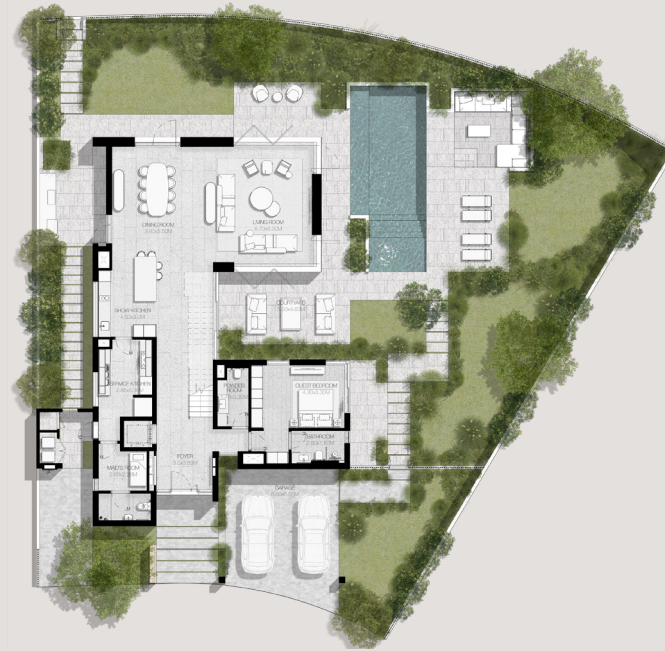




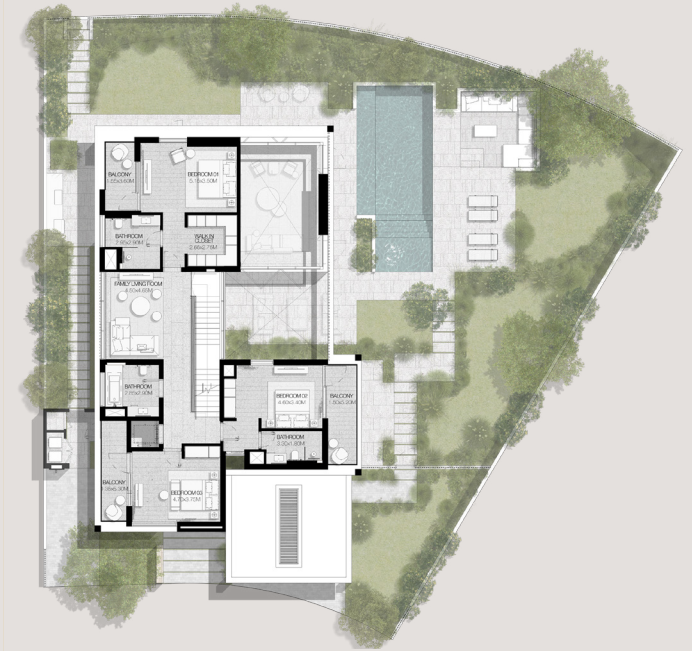
5-BEDROOM
VILLAS



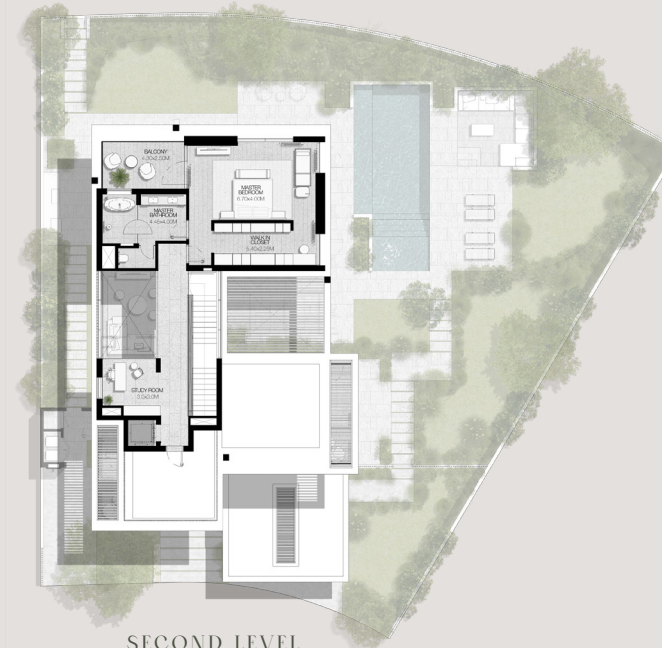
THE ACRES



GROUND LEVEL



FIRST LEVEL



SECOND LEVEL

5 BEDROOMS

VILLA TYPE E-5BR

TOTAL AREA: 552.25 SQM | 5,944.37 SQFT

DISCLAIMER: PLANS, DETAILS AND UNIT ORIENTATION INCLUDED ARE INDICATIVE ONLY AND ARE SUBJECT TO CHANGE BY THE DEVELOPER/SELLER AT ITS SOLE DISCRETION WITHOUT NOTICE AND/OR LIABILITY. ALL IMAGES, INCLUDING FEATURES, FINISHES, FURNISHINGS, VIEW AND SCALE ARE ILLUSTRATIVE ONLY. FINAL AREAS, ORIENTATION, DIMENSIONS, LAYOUT AND MATERIALS MAY DIFFER FROM THOSE STATES.



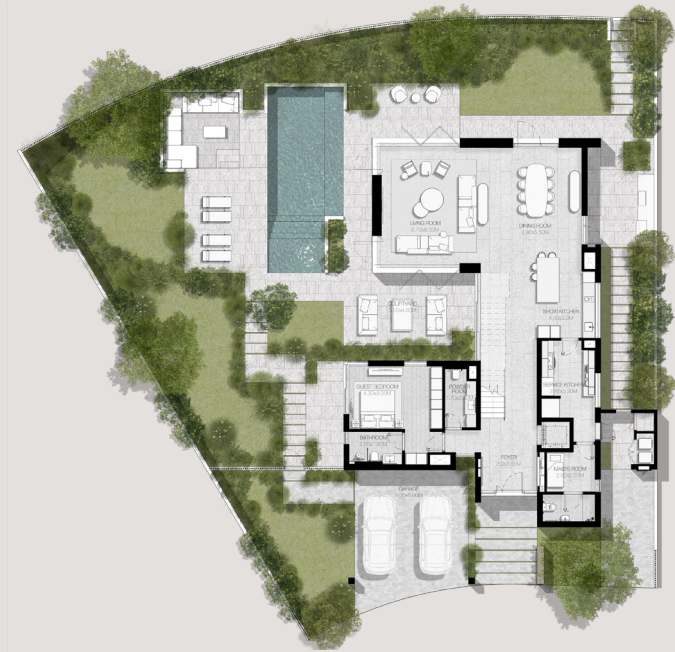


THE ACRES

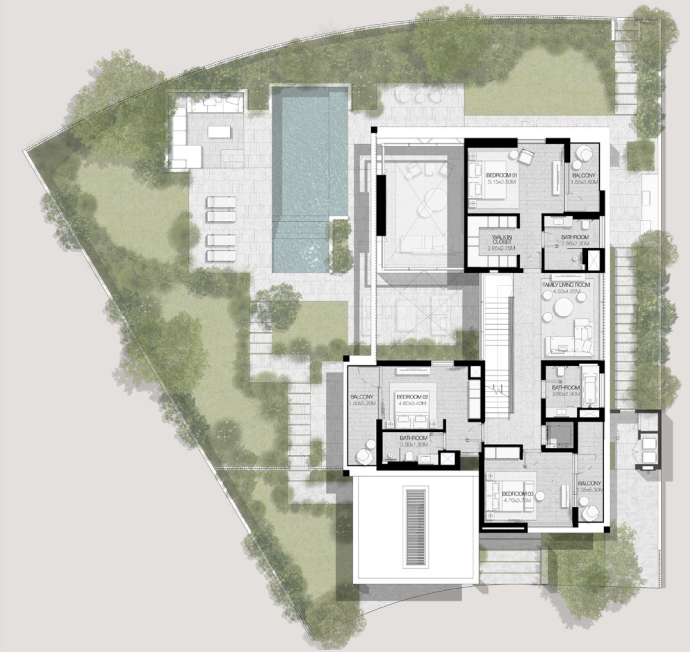
5 BEDROOMS

VILLA TYPE E-5BR(M)

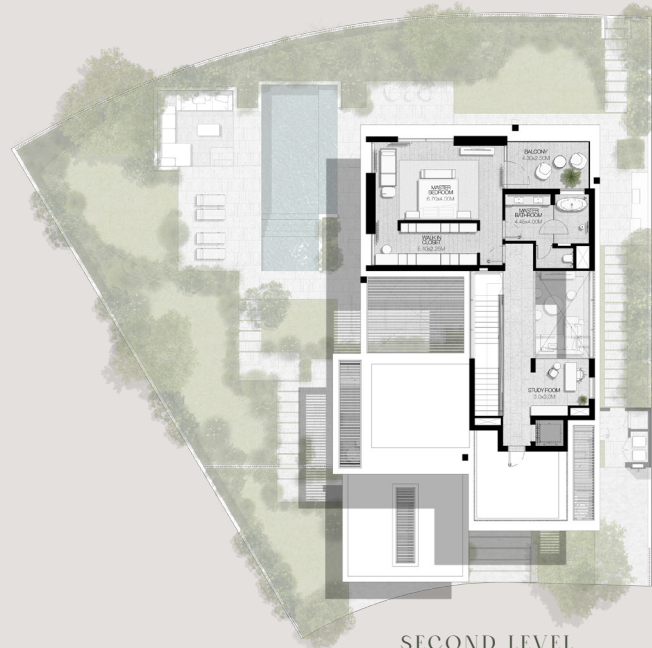
TOTAL AREA: 552.26 SQM | 5,944.48 SQFT



GROUND LEVEL



FIRST LEVEL



SECOND LEVEL

DISCLAIMER: PLANS, DETAILS AND UNIT ORIENTATION INCLUDED ARE INDICATIVE ONLY AND ARE SUBJECT TO CHANGE BY THE DEVELOPER/SELLER AT ITS SOLE DISCRETION WITHOUT NOTICE AND/OR LIABILITY. ALL IMAGES, INCLUDING FEATURES, FINISHES, FURNISHINGS, VIEW AND SCALE ARE ILLUSTRATIVE ONLY. FINAL AREAS, ORIENTATION, DIMENSIONS, LAYOUT AND MATERIALS MAY DIFFER FROM THOSE STATES.





THE ACRES

5 BEDROOMS

VILLA TYPE F-5BR

TOTAL AREA: 557.55 SQM | 6,001.42 SQFT



GROUND LEVEL



FIRST LEVEL



SECOND LEVEL

DISCLAIMER: PLANS, DETAILS AND UNIT ORIENTATION INCLUDED ARE INDICATIVE ONLY AND ARE SUBJECT TO CHANGE BY THE DEVELOPER/SELLER AT ITS SOLE DISCRETION WITHOUT NOTICE AND/OR LIABILITY. ALL IMAGES, INCLUDING FEATURES, FINISHES, FURNISHINGS, VIEW AND SCALE ARE ILLUSTRATIVE ONLY. FINAL AREAS, ORIENTATION, DIMENSIONS, LAYOUT AND MATERIALS MAY DIFFER FROM THOSE STATES.





THE ACRES

5 BEDROOMS

VILLA TYPE F-5BR(M)

TOTAL AREA: 557.55 SQM | 6,001.42 SQFT



GROUND LEVEL



FIRST LEVEL



SECOND LEVEL

DISCLAIMER: PLANS, DETAILS AND UNIT ORIENTATION INCLUDED ARE INDICATIVE ONLY AND ARE SUBJECT TO CHANGE BY THE DEVELOPER/SELLER AT ITS SOLE DISCRETION WITHOUT NOTICE AND/OR LIABILITY. ALL IMAGES, INCLUDING FEATURES, FINISHES, FURNISHINGS, VIEW AND SCALE ARE ILLUSTRATIVE ONLY. FINAL AREAS, ORIENTATION, DIMENSIONS, LAYOUT AND MATERIALS MAY DIFFER FROM THOSE STATES.



The image features a blurred background of green and yellow leaves, possibly from a plant or tree. In the center, the MERAAS logo is displayed in white. The logo consists of a stylized icon of four vertical bars of varying heights, with a horizontal bar above and below the central two bars. To the right of this icon, the word "MERAAS" is written in a bold, uppercase, sans-serif font.

MERAAS